

PLS-98

90

WORK TOP

Worktop on open cabinet (included 1 Head
end filler strip mod.TPA-9)



Construction - Fabricated using CrNi 18/10 AISI 304 grade Stainless Steel
Scotch-Brite Satin polish Finish, incorporating 2mm thick worktop,
rounded edges, chromed details and rear splash back. Model -
Professional worktop with or without drawer on open cabinet. Fittings -
Appliance is supplied with steel or plastic tanks, h 15cm. Adjustable feet.
Doors not included.

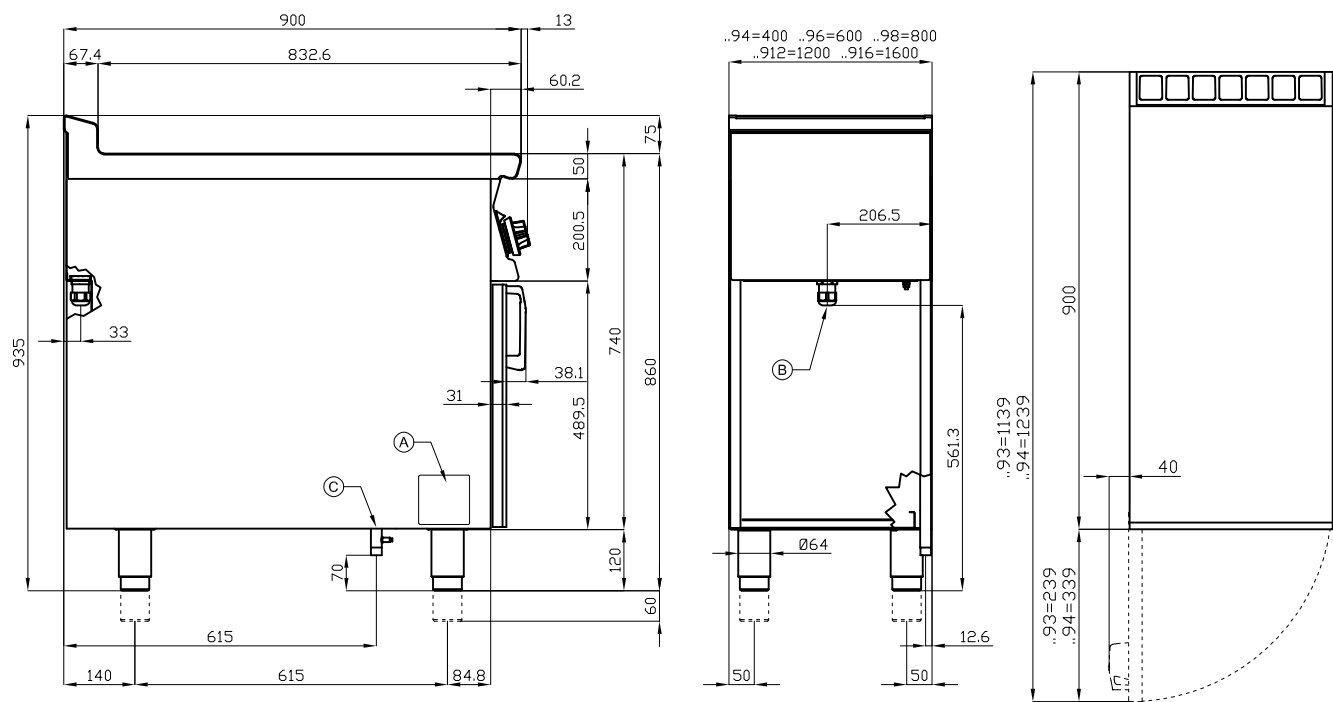


ITALIAN CULINARY ART

The pictures are purely representative. The
manufacturer reserves the right to modify the
technical data and models without previous
notice.

PLS-98

90
WORK TOP



A	Data plate				
---	------------	--	--	--	--

MODEL: PLS-98
DIMENSIONS: cm. 80x 90x 90h



kg: 70
m³: 0.894
mm: 830x970x1110

BUY LOTUS BUY 

The pictures are purely representative. The manufacturer reserves the right to modify the technical data and models without previous notice.



LOTUS S.P.A. Via Calmaor, 46
31020 San Vendemiano (TV) - Italy
Tel. + 39 0438 778020 / 778468
Fax + 39 0438 778277
www.lotuscookers.it - lotus@lotuscookers.it